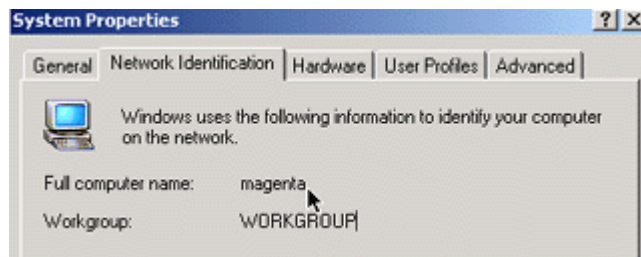


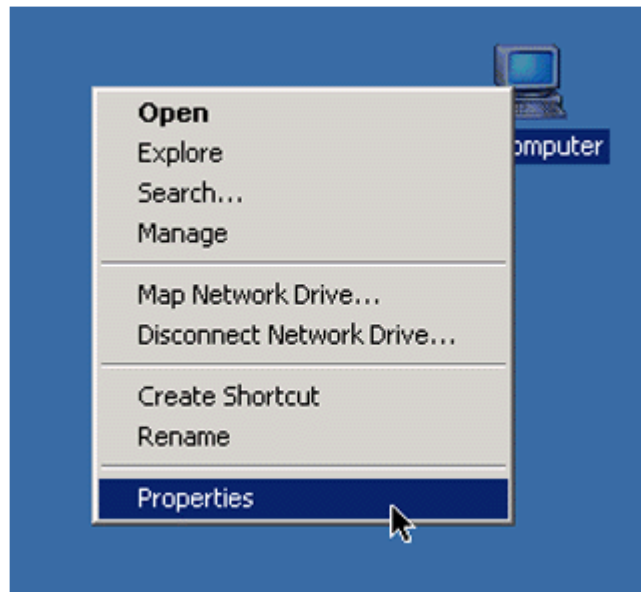
Modifying Identification Settings

Step 1: What's in a Name?



Each computer has a name associated with it that identifies the computer within its domain or workgroup. You might want to rename a computer to more accurately reflect its use, location, and so on.

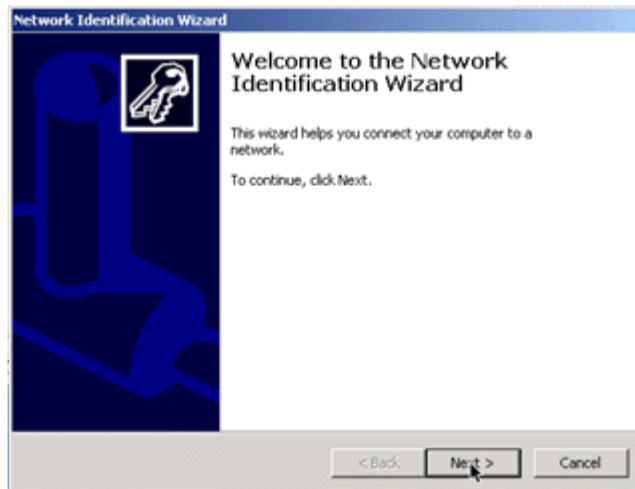
Step 2: Network ID Settings



You modify network ID settings through the System Properties sheet, which you can access in either of two ways. Right-click My Computer and choose Properties or choose Advanced>Network Identification in the Network Connections section of the Control Panel.

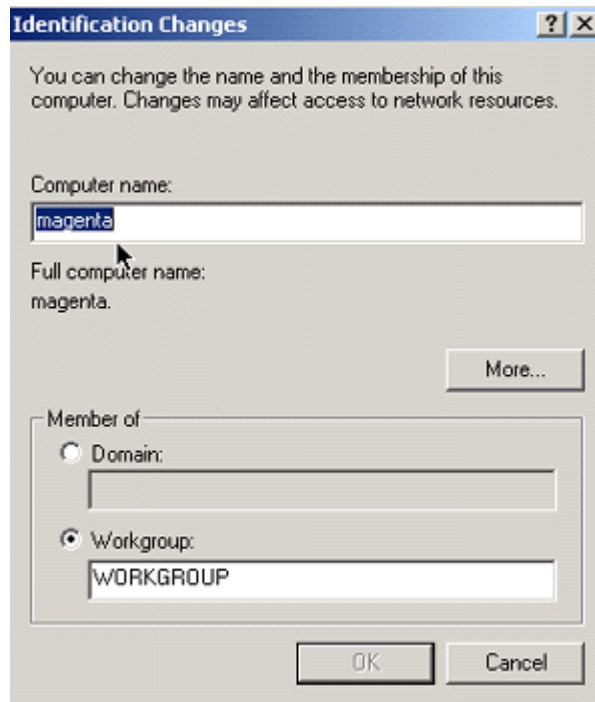
Step 3: Use the Wizard

[back to top](#) →



The Network Identification tab in the System Properties sheet provides two methods for changing the network ID. Click Network ID to run a wizard that walks you through the process of specifying a computer name and choosing a domain or workgroup.

Step 4: Do it Manually



To change settings without the wizard, simply click the Change button to rename the computer. Enter the new name in the Computer name field, and click OK.